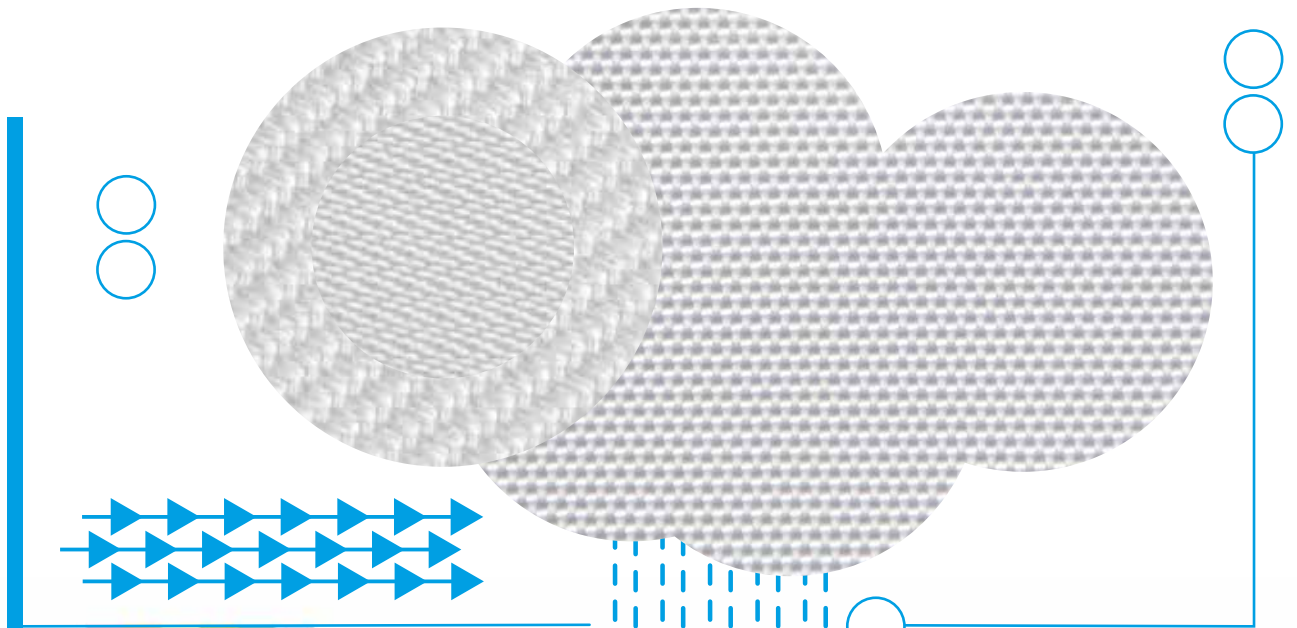




KOFIL[®]

Liquid filtration



ISO 9001
Certification

PE woven filtration materials:



PE 20/3 (100 % Polyester multifilament)
Applications: tubes for climatisation, dedusting iron, foundries



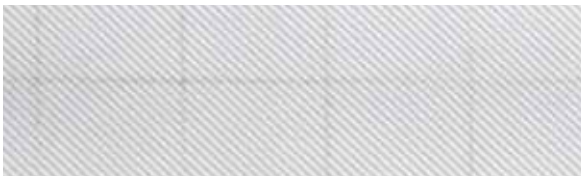
PE 50/14 (100 % Polyester multifilament)
Applications: food, powder material



PE 44 (100 % Polyester yarn)
Applications: pharmaceutical



PEK 30 (Polyester multifilament / METAL fibers yarn)
Applications: pharmaceutical GLATT, AEROMATIC



PEK 20/3 (Polyester multifilament / METAL fibers yarn)
Applications: pharmaceutical GLATT, AEROMATIC



PEK 50/14 (100 % Polyester multifilament / METAL fibers yarn)
Applications: food, powder material, pharmaceutical, silo bags



PP woven filtration materials:



PP 1/D (100% polypropylene multifilament)
Applications: all kind of applications, galvanic, pharmaceutical, waste water,...



PP 35 (100% polypropylene yarn)
Applications: food, sugar



PP 41 (100% polypropylene, warp-multifilament, weft-yarn)
Applications: food, sugar, pharmac., galvanic, waste water



PP 46/SE (100% polypropylene, yarn with multifilament)
Applications: galvanic



PP 55 (100% polypropylene, warp-multifilament, weft-yarn),
Applications: pharmaceutical, galvanic, waste sludge



PP 32 (100% polypropylene yarn)
Applications: chemical



PP 40 (100% polypropylene yarn)
Applications: sugar, galvanic, vaccum drums, waste water

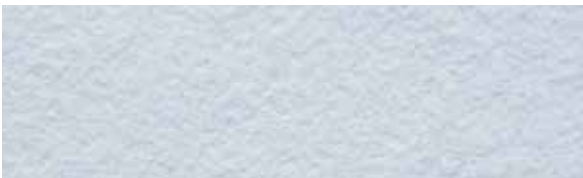


PP 41/V (100% polypropylene, warp-multifilament, weft-yarn)
Applications: wine bags



PP 50 (100% polypropylene, warp-multifilament, weft-yarn)
Applications: galvanic, waste water

Micron rating - PES and PP non-woven filtration materials:



G PE 001, 005, 010, 025, 050, 100, 150, 200 micron
Applications: food, pharmaceutical



G PP 001, 005, 010, 025, 050, 100, 150, 200 micron
Applications: food, pharmaceutical

PP non-woven filtration materials:



PP - 450 TM, PP 650 TM
Applications: food



PP 350-600 HKT /OH

Liquid filtraton materials:

ARTICLE	COMPOSITION	ART	APPLIC.	WEIGHT g/m ²	AIR PERM. l/dm ² /min	THICKNESS mm	FINISH
PE WOVEN							
PE 20/3	PES	M/M	G,CH,PH,I,F	220	120	0,30	W,T,K
PE 44	PES	M/M	G,CH,PH,I,F	445	33	0,55	W,T,K
PE 50/14	PES	M/M	F	440	150	0,60	W,T,K
PEK 20/3	PES-ANTISTATIC	M/M+A	PH	220	120	0,30	W,T,K
PEK 30	PES-ANTISTATIC	M/M+A	PH	220	30	0,40	W,T,K
PEK 50/14	PES-ANTISTATIC	M/M+A	PH	440	150	0,60	W,T,K
PP WOVEN							
PP 1/D	PP	M/M	G,CH,PH,I,F	330	10	0,70	W,T,K
PP 32	PP	M/M	G,CH,PH,I,F	320	300	0,80	W,T,K
PP 35	PP	M/M	G,CH,PH,I,F	320	150	0,70	W,T,K
PP 40	PP	M/M	G,CH,PH,I,F	425	60	1,00	W,T,K
PP 41	PP	M/M	G,CH,PH,I,F	450	70	1,00	W,T,K
PP 41/V	PP	M/M	G,CH,PH,I,F	450	50	1,00	W,T,K
PP 46/SE	PP	M/M	G,CH,PH,I,F	460	200	1,50	W,T,K
PP 50	PP	M/M	G,CH,PH,I,F	510	20	0,80	W,T,K
PP 55	PP	M/M	G,CH,PH,I,F	560	30	1,00	W,T,K
MICRON RATING NON-WOVEN							
POLYESTER							
G PE 001	PES	NEEDLEFELT	CH,PH,F		70-110	1,9-2,3	T
G PE 005	PES	NEEDLEFELT	CH,PH,F		360-420	1,2-1,6	T
G PE 010	PES	NEEDLEFELT	CH,PH,F		430-490	2,2-2,6	T
G PE 025	PES	NEEDLEFELT	CH,PH,F		520-580	2,3-2,7	T
G PE 050	PES	NEEDLEFELT	CH,PH,F		700-760	2,2-2,6	T
G PE 100	PES	NEEDLEFELT	CH,PH,F		1000-1100	2,4-2,8	T
G PE 150	PES	NEEDLEFELT	CH,PH,F		1050-1150	2,4-2,8	T
G PE 200	PES	NEEDLEFELT	CH,PH,F		1100-1250	2,4-2,8	T
POLYPROPYLENE							
G PP 001	PP	NEEDLEFELT	CH,PH,F		70-110	2,8-3,2	T
G PP 005	PP	NEEDLEFELT	CH,PH,F		110-200	3,1-3,5	T
G PP 010	PP	NEEDLEFELT	CH,PH,F		420-510	3,2-3,6	T
G PP 025	PP	NEEDLEFELT	CH,PH,F		690-810	3,0-3,4	T
G PP 050	PP	NEEDLEFELT	CH,PH,F		990-1110	3,2-3,6	T
G PP 100	PP	NEEDLEFELT	CH,PH,F		1190-1310	3,2-3,6	T
G PP 150	PP	NEEDLEFELT	CH,PH,F		1390-1510	3,2-3,6	T
G PP 200	PP	NEEDLEFELT	CH,PH,F		1450-1570	3,2-3,6	T
NON-WOVEN							
PP 350-600 HKT /OH	PP	NEEDLEFELT +SCRIM	F	350-600	80-320	1,7-2,5	T,K
PP 450 TM	PP	NEEDLEFELT+SCRIM	F	450	120	2,0	T,K
PP 650 TM	PP	NEEDLEFELT+SCRIM	F	650	70-110	2,9	T,K
PE 130 K	PE	NEEDLEFELT	G,I	130	1110-1410	0,7-0,9	K
PE 150 K	PE	NEEDLEFELT	G,I	150	1800	1,3-1,5	K

ART - M/M (MULTI-MULTIFILAMENT)

APPLICATIONS - G (GENERAL), CH (CHEMICAL), PH (PHARMACEUTICAL), I (INDUSTRIAL), F (FOOD)

FINISH - T (THERMOFIXED), K (CALANDERED), W (WASHED)

